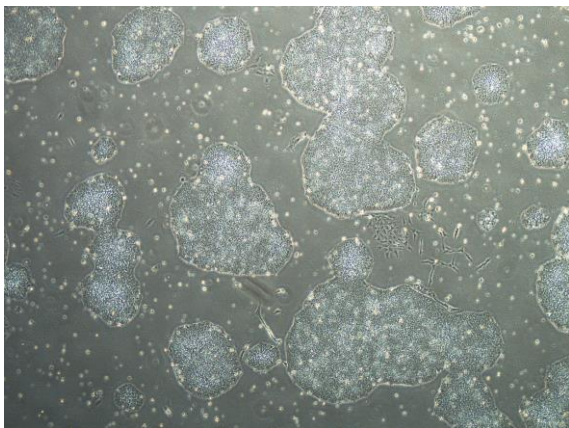
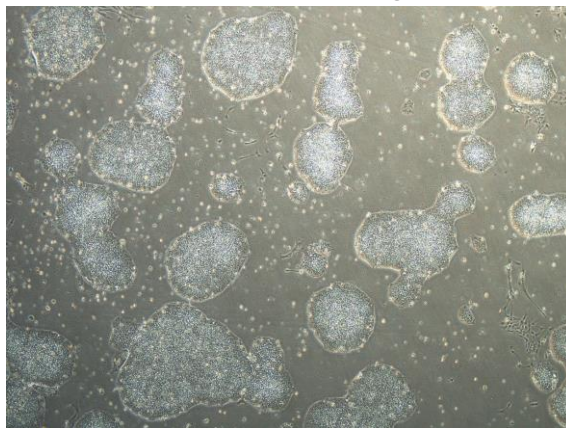


【 CiRA-j-1237 】 Morphology of iPSC colonies

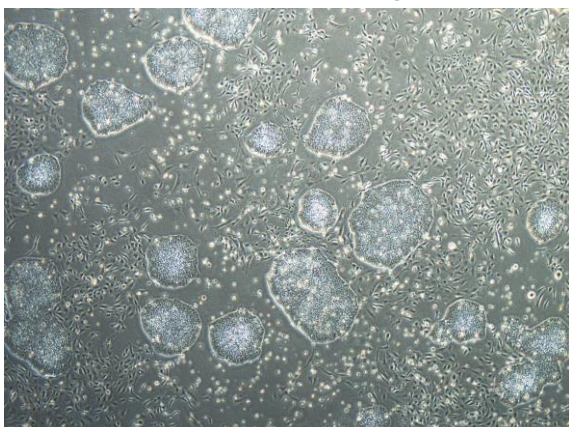
CiRA-j-1237-A: passage-3



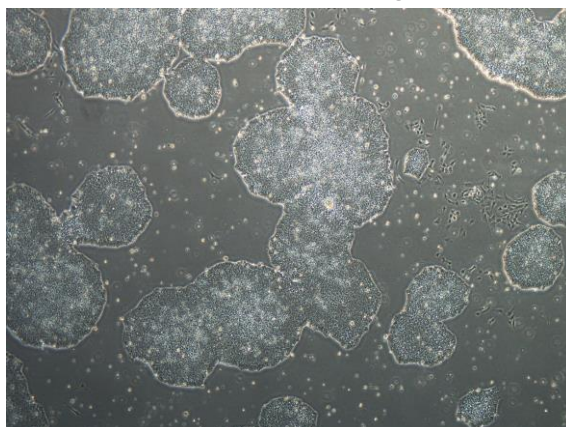
CiRA-j-1237-B: passage-3



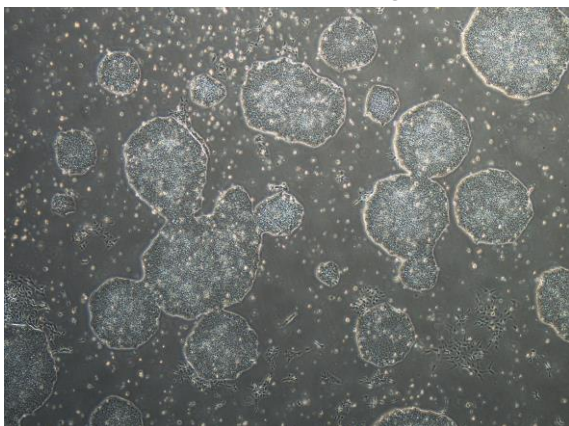
CiRA-j-1237-C: passage-3



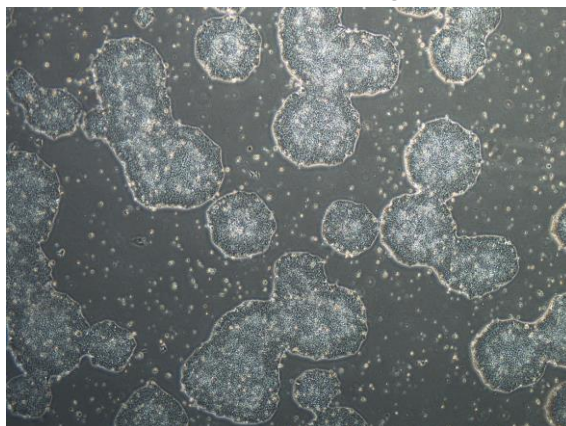
CiRA-j-1237-D: passage-3



CiRA-j-1237-E: passage-3



CiRA-j-1237-F: passage-3



(All images were captured at 4x magnification)